

evacuate immediately!

Get to a high place as quickly as possible!



continue evacuation procedures.

Tsunami Warning/ Advisory Categories

Category	Height of Tsunami	
	Description	Height
Major Tsunami Warning	Huge	over 10m (10m+)
		10m (5-10m)
		5m (3-5m)
Tsunami Warning	High	3m (1-3m)
Tsunami Advisory	—	1m (0.2-1m)

If you feel a strong tremor at the beach...
 If you feel a long, drawn-out tremor...
 If you notice a tsunami warning has been issued...

Evacuate immediately!
Head to a safe place at a higher elevation!



Region at risk of tsunami strike



Evacuation sites providing protection from a tsunami

Publisher: Sendai Regional Headquarters, Japan Meteorological Agency



Tohoku Region

津波

TSUNAMI

For the Protection of Life



When a tsunami warning or advisory is issued,

Tsunami Warning



For the duration of the tsunami warning,

Tsunami Flag

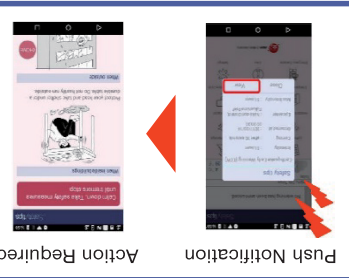


Photo: Japan Lifesaving Association

If you see this flag at the beach, evacuate immediately!

Safety tips

(Disaster information app for international visitors)



Publisher: Japan Tourism Agency



Japan Meteorological Agency
 Information in Multiple Languages



Access using a smartphone:
 Tsunami Warning / Advisory
 Earthquake information



Access using a PC:
<https://www.jma.go.jp/jma/kokusai/multi.html>

Features of Tsunami Occurring in the Tohoku Region

Features on the Sea of Japan Side

Tsunami origin is close to land

Features on the Pacific Coast Side

Large-scale earthquakes and large tsunamis are likely to occur

May 26, 1983
The 1983 Central Sea of Japan Earthquake, M7.7



There is no time to spare before the tsunami reaches land



Aomori

Akita

Iwate

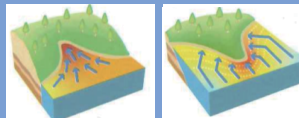
Yamagata

Miyagi

Fukushima

Ria Coast

High tsunami waves more likely at inner parts of bays and tips of capes



March 11, 2011
The 2011 Great East Japan Earthquake, M9.0



Flat Coastline

The tsunami reaches regions further inland from the coast

Tsunami Evacuation Guide Signs



Tsunami Shelter



Tsunami Evacuation Building

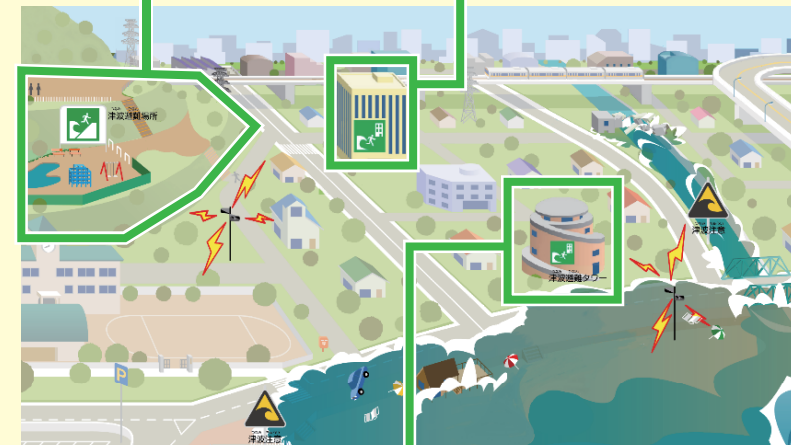


Photo: Sendai City



Tsunami Evacuation Tower

Evacuate immediately!
Head toward a sign without delay!